

Saltram Crescent, Maida Vale, W9 3JS

Asking Price £499,950

Subject to Contract

- Blank canvass
- Split level
- Vacant
- New lease
- Two double bedroomed apartment
- Full width reception
- High ceilings
- By both Maida Vale & Queens Park

Energy Efficiency Rating		
	Current	Potential
Very energy efficient - lower running costs		
(92 plus) A		
(81-91) B		
(69-80) C		
(55-68) D		
(39-54) E		
(21-38) F		
(1-20) G		

Environmental Impact (CO ₂) Rating		
	Current	Potential
Very environmentally friendly - lower CO ₂ emissions		
(92 plus) A		
(81-91) B		
(69-80) C		
(55-68) D		
(39-54) E		
(21-38) F		
(1-20) G		

We have endeavoured to supply this information as accurate as possible. Before making an offer, buying or renting this property please seek independent or professional advice.



Saltram Crescent, W9 3JS

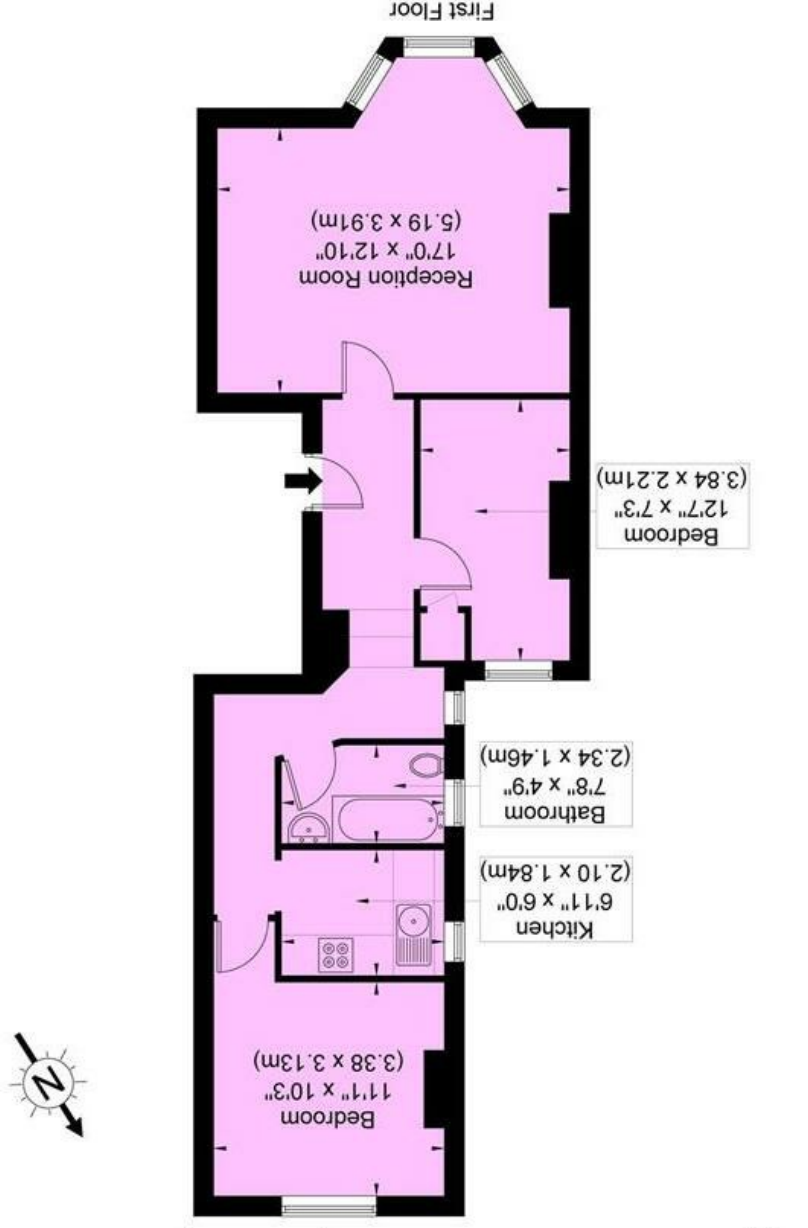
Blank canvass... unique opportunity to acquire an unmodernized, spacious & bright two double bedroom apartment on the first floor, boasting from a split level space. Access via entry-phone intercom with original mosaic tiled flooring in the main entrance hall.

The property offers over 675sqft living/entertaining space, boasting a full-width reception room which potentially could hold the kitchen too, and fair-sized bathroom.

Situated at the south end of Saltram Crescent only a stone's throw of local shops, a variety of bars/cafes, restaurants and within walking distance of Maida Vale/Little Venice (Bakerloo Line) train stations and numerous alternative transport links.

Saltram Crescent, W9 3JS

Approx. Gross Internal Area = 675 sq ft / 62.7 sq m



Ref
Copyright THEBLEUPLAN
Disclaimer : Floor plan measurements are approximate and are for illustrative purposes only
While we do not doubt the floor plan accuracy and completeness, you or your advisors should
conduct a careful, independent investigation of the property in respect of monetary valuation



Tel: +44 (0)2 8960 9988
Fax: +44 (0)2 8960 9989

Email: mail@warwickestateagency.co.uk
warwickestateagents.tv | warwickestateagents.co.uk

69 Chamberlayne Road, London NW10 3ND
Tel: +44 (0)20 8960 9988 Fax: +44 (0)20 8960 9989